

ELETTROPOMPE DA DRENAGGIO DRAINAGE ELECTRIC PUMPS

XSP

ELETTROPOMPE SOMMERGIBILI ACQUE SPORCHE E CARICHE SEWAGE SUBMERSIBLE PUMPS

APPLICAZIONE

- Può essere utilizzata per il drenaggio delle acque reflue, con corpi solidi sino ad un diametro di 25 mm. Particolarmente indicata per lo smaltimento di acque freatiche e fognarie, acque di superficie stagnante, acque luride e particolarmente cariche, ambienti allagati, quali scantinati, box o garage, aree di lavaggio macchine.

POMPA

- Max profondità di immersione: 5 m
- Max temperatura liquido: +40°C
- Valore pH liquido: 4-10

MOTORE

- Avvolgimento motore in rame
- Protezione termica incorporata
- Albero in acciaio inox
- Classe di isolamento: B
- Classe di protezione: IP68

APPLICATION

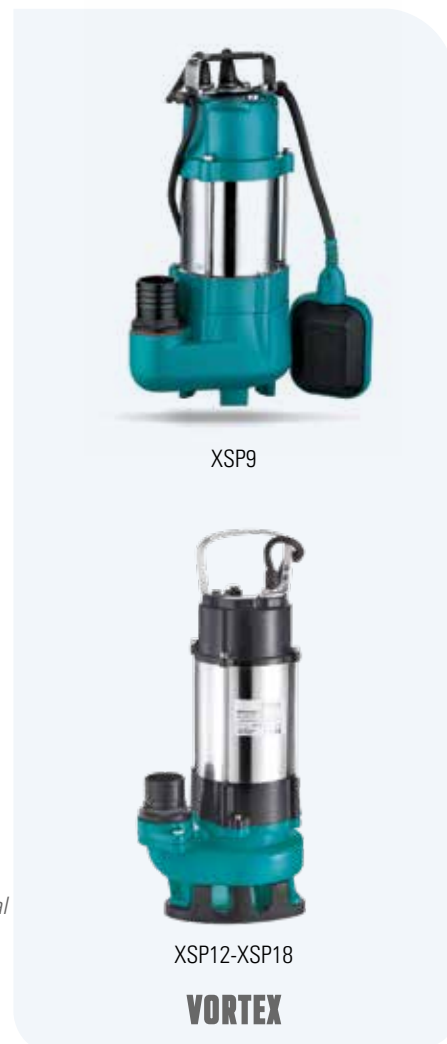
- Wastewater drainage in factories, construction sites and commercial facilities.
- Drainage system in municipal sewage treatment plants.
- Drainage station in residential quarters.
- Municipal projects.
- Methane pools and field irrigation in countryside.

PUMP

- Max. immersion depth: 5 m
- Max. liquid temperature: +40°C
- Liquid pH value: 4 - 10
- Liquid kinematic viscosity: $7 \times 10^{-7} \sim 23 \times 10^{-6} \text{ m}^2/\text{s}$
- Max. liquid density: $1.2 \times 10^{-3} \text{ kg/m}^3$

MOTOR

- Copper winding
- Built-in thermal protector
- Stainless steel welded shaft
- Insulation class: B
- Protection class: IP68

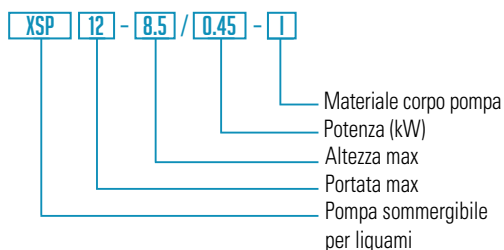


XSP9

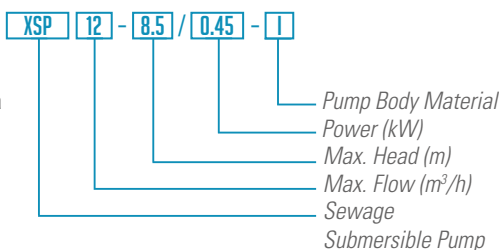
XSP12-XSP18

VORTEX

CODICI IDENTIFICATIVI



IDENTIFICATION CODES



DATI TECNICI | TECHNICAL DATA

Modello Model	Potenza Power		Ampere	Diametro uscita Outlet diameter	Voltaggio Voltage	Portata max. Max. flow	Prevalenza max. Max. head	Max diam particelle Max. dia. of particle	Codice Code
	kW	HP							
XSP9-7.5/0.25I	0.25	0.33	1.80	25/32/40 mm	220/50 (V/Hz)	150 lt	7.5 m	15 mm	10XSP9-7
XSP12-8.5/0.45I	0.45	0.60	2.70	50 mm	230/50 (V/Hz)	200 lt	8.5 m	25 mm	10XSP12
XSP18-12/0.75I	0.75	1.0	4.20	50 mm	230/50 (V/Hz)	300 lt	12 m	25 mm	10XSP18

DIMENSIONI | DIMENSION

Modello Model	DN	L (mm)	W (mm)	H (mm)
XSP9-7.5/0.25I	1¼"	166	121	355
XSP12-8.5/0.45I	2"	225	150	450
XSP18-12/0.75I		226	159	500

DIMENSIONI IMBALLO | PACKAGE INFORMATION

Modello Model	GW (kgs)	L (mm)	W (mm)	H (mm)
XSP9-7.5/0.25I	10	185	180	360
XSP12-8.5/0.45I	18.2	263	222	495
XSP18-12/0.75I	20.2	265	195	540

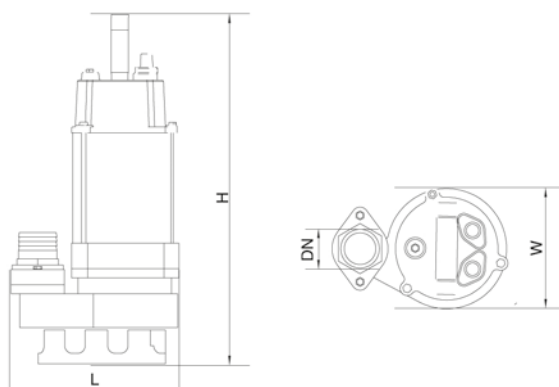
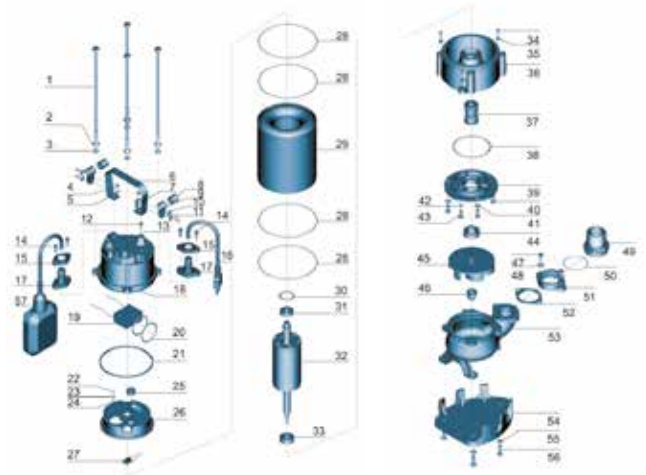
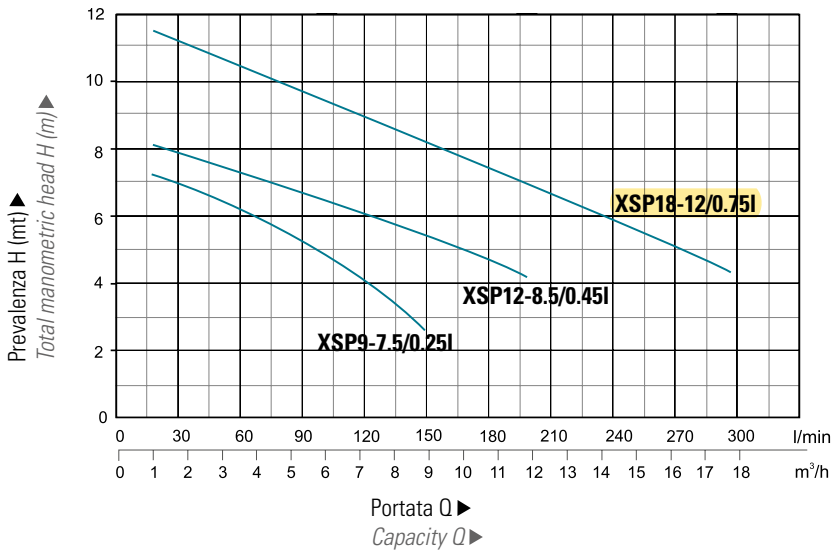


DIAGRAMMA PRESTAZIONI | HYDRAULIC PERFORMANCE CURVE



DESCRIZIONE COMPONENTI | MATERIALS TABLE

Pos. Pos.	Part. Part.	Materiale Material	Pos. Pos.	Part. Part.	Materiale Material	Pos. Pos.	Part. Part.	Materiale Material
1	Tirante Bolt	Acciaio Inox Stainless Steel	20	O-ring O-ring	NBR	39	Coperchio olio Oil chamber cover	Ghisa HT200 Cast iron
2	Dado Stretching washer	Acciaio Inox Stainless Steel	21	Guarnizione gommata Rubber washer	NBR	40	Vite Screw	Acciaio Inox Stainless Steel
3	Dado Washer	Acciaio Inox Stainless Steel	22	Vite Screw	Ottone CuZn40 Brass	41	Dado Washer	Acciaio Inox Stainless Steel
4	Bullone Bolt	Acciaio Inox Stainless Steel	23	Rosetta Stretching washer		42	O-ring O-ring	NBR
5	Dado Washer	Acciaio Inox Stainless Steel	24	Rosetta Washer	Ottone CuZn40 Brass	43	Vite Screw	Acciaio Inox Stainless Steel
6	Maniglia Handle	Acciaio Inox Stainless Steel	25	Portacavo Cable holder	NBR	44	Paraolio Oil seal	
7	Dado Nut	Acciaio Inox Stainless Steel	26	Coperchio motore Motor cover	Ghisa HT200 Cast iron	45	Girante Impeller	Ghisa HT200 Cast iron
8	Protezione Protector	NR	27	Protezione termica Thermal protector		46	Dado Nut	Acciaio Inox Stainless Steel
9	Cavo Cable presser	Acciaio Inox Stainless Steel	28	O-ring O-ring	NBR	47	Bullone Bolt	Acciaio Inox Stainless Steel
10	Dado Washer	Acciaio Inox Stainless Steel	29	Cassa motore con statore avvolto Stator		48	Dado Washer	Acciaio Inox Stainless Steel
11	Vite Screw	Acciaio Inox Stainless Steel	30	Dado Wave washer		49	Connettore Connector	ABS
12	Bullone Bolt	Acciaio Inox Stainless Steel	31	Cuscinetto Ball bearing		50	O-ring O-ring	NBR
13	O-ring O-ring	NBR	32	Albero motore Rotor		51	Dado Connector nut	Ghisa HT200 Cast iron
14	Vite Screw	Acciaio Inox Stainless Steel	33	Cuscinetto Ball bearing		52	Guarnione gomma Rubber washer	NBR
15	Flangia	Acciaio Inox Stainless Steel	34	Vite Screw	Acciaio Inox Stainless Steel	53	Corpo pompa Pump body	Ghisa HT200 Cast iron
16	Cavo Cable		35	Dado Washer	Acciaio Inox Stainless Steel	54	Base Base plate	Ghisa HT200 Cast iron
17	Protezione cavo Cable protector		36	Connessione Connection part	Ghisa HT200 Cast iron	55	Dado Washer	Acciaio Inox Stainless Steel
18	Coperchio condensatore Capacitor cover	Ghisa HT200 Cast iron	37	Tenuta meccanica Mechanical seal	Grafite/Ceramica Carbon/Ceramic	56	Vite Screw	Acciaio Inox Stainless Steel
19	Condensatore Capacitor		38	O-ring O-ring	NBR	57	Interruttore galleggiante Float switch	